



**EASTPOWER<sup>®</sup>**  
**EASTPOWER CO., LTD.**

Head office & Factory : 17-16, Pyeonghwa-ro 634beon-gil, Tanhyeon-myeon, Paju-si, Gyeonggi-do, Korea  
TEL: 82-31-943-3541 FAX: 82-31-943-3540  
www.eastpower.co.kr / e-mail : eastpwr@eastpower.co.kr



POWER SYSTEM FOR GENERATION

**E<sup>△</sup>STPOWER<sup>®</sup>**

Diesel Engine Generator



**EASTPOWER CO., LTD.**

## Committed To Our Customers



Founded as a Generator set OEM manufacturer in 1994 succeeding Daewoo Heavy Industries Ltd by some experienced people of sales and engineering of the same division, Eastpower has seen the continued growing to play leading role in the generating set industry.

Eastpower manufactured its first own brand generator in 2000 and registered as a member of **KEMC**(Korea Electrical Manufacturers' Cooperative). In 2004, Eastpower was registered as a qualified supplier to **KHNP**(Korea Hydro and Nuclear Power Co., Ltd.) and got award to supply Non-class 1E Diesel generators for Shinhanul Nuclear Power plant. Also we have been one of the leading manufacturers and suppliers to Korean government agency/organization through Public Procurement Service, achieving its current structure for both domestic and overseas sales and services. So we became an expert in machinery and hardware for electrical energy supply to nationwide and worldwide market in a short span of time.

So far, we have manufactured and supplied various kinds of diesel engine generator set. Every material including alternator and control panel except diesel engine is our own manufactured product. We design and make them by ourselves. We, as a professional leader of Korea's largest generator set manufactures and exporters for a long time period, take pride of the top quality and having a number of patents and public certificates, based on professional manpower with wide experiences.

Eastpower will provide all your energy needs with total capacity to meet the requirements of customers' need and shape by fully testing every unit with state of part testing method whatever the needs of power load required.

The quality, the efficiency  
and our **EASTPOWER's** way

## General Features

**EASTPOWER's** diesel engine generators offer the best cost-effectiveness, technology, performance and efficiency as market demands in various fields like industrial sites, ships, military including commercial buildings, apartments, hospitals and factories.

**EASTPOWER** makes and supplies a variety of diesel generator sets which meet customer's needs. Generating power is available up to 3000kW and we design and make all parts like alternators and control panels of our own except diesel engines.

**EASTPOWER** makes and supplies various kinds of generators such as weatherproof bonnet, soundproof canopy, trailer, mobile container, containerized type and synchronizing system etc.

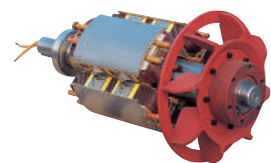


# 3Phase AC Synchronous Generator

## Eastpower Alternator's characteristics

It has tidy design, strong durability, simple operation, easy maintenance. And we maximize output and cooling efficiency for same ratings. So it's very economical and can accord with various generator sets.

- Superiority and solidity in electrical characteristics by designing Salient Pole Field typed Rotor.
- When changing from no-load to full-load basis on Rated operation, Automatic Voltage Regulation(AVR) is available within regulation 1%.
- Wave-form factor within THD(Total Harmonic Distortion) 10%, Electric characteristics within radio frequency interference RF 10%.
- It's convenient to work for the terminal box, which has enough space for maintenance clearance.
- Cooling efficiency maximization due to mechanical engineering design of cooling fan.





# Generator Set



Weatherproof Bonnet



Soundproof Canopy



Trailer



Mobile Container



Containerized type



Soundproof Vehicle



P.T.O System Generator set



Skid Open type



Gas Generator set

# Standard Generator Set Features

## Standard Features

Descriptions		eGCU7000 Digital Type	Analogue Type
Meters & Gauge	Voltmeter	<input type="radio"/>	<input type="radio"/>
	Amperemeter	<input type="radio"/>	<input type="radio"/>
	Wattmeter	<input type="radio"/>	Option
	Frequency & Tachometer	<input type="radio"/>	<input type="radio"/>
	Running Hour Meter	<input type="radio"/>	<input type="radio"/>
	Coolant Temp. Gauge	<input type="radio"/>	<input type="radio"/>
	Lube Oil Pressure Gauge	<input type="radio"/>	<input type="radio"/>
	Lube Oil Temp. Gauge	<input type="radio"/>	<input type="radio"/>
	Battery Voltmeter	<input type="radio"/>	<input type="radio"/>
Control Button & S/W	Emergency Stop Button	<input type="radio"/>	<input type="radio"/>
	Lamp Test/Reset Button	<input type="radio"/>	<input type="radio"/>
	Voltage/Ampere Select S/W	<input type="radio"/>	<input type="radio"/>
	Off/Run/Auto	<input type="radio"/>	<input type="radio"/>
Protect Circuit	Low Oil Pressure	<input type="radio"/>	<input type="radio"/>
	High Coolant Temperature	<input type="radio"/>	<input type="radio"/>
	Overspeed	<input type="radio"/>	<input type="radio"/>
	Overvoltage Relay(EOVR)	<input type="radio"/>	Option
	Under Voltage Relay(EUVR)	<input type="radio"/>	Option
	Overcurrent Relay(EOCR)	<input type="radio"/>	Option
	Ground Overcurrent Relay(EOCGR)	<input type="radio"/>	Option
	Starting Failure	<input type="radio"/>	<input type="radio"/>
Communications Functions	Remote Control	Dry Contact Signal & Computer Control	Remote Controlled by Dry Contact Signal
	Remote Monitoring	Remote Monitoring by Computer Program	Need to Special Equipment

## Mounted Control Panel



DSE 7320



Digital Type (eGCU 7000)



Analogue Type

### •A.B.C



- A.B.C. (Auto Battery Charger)
- Rating: 220VAC, 1phase, 60Hz or 50Hz, 5A or 10A
  - Output Voltage: 24VDC or 12VDC
  - Stable output voltage against variable input

### •A.V.R



- A.V.R. (Auto Voltage Regulator)
- Gen. Voltage Automatic Regulation
  - Input: 100 ~ 300VAC (50/60Hz)
  - Sensing Input: 220/380/440VAC (50/60Hz)
  - Regulation: Below 0.5%
  - Output: 7A ~ 15A, 90V

### •E.C.U



- E.C.U. (Engine Control Unit)
- Auto or Manual Start
  - Protection circuit device of Engine
  - Silicon Mold

## Mounted Control Panel

### Terminal Box

Location of Terminal box is basically in right side, but can be chosen freely as per taking-out direction. The back side is designed in one-body type for convenience of operation and maintenance.

### Control Panel

Integrated inside design provides more options and functions. Its design and operation is simple and smart.

### Main Circuit Breaker

### Diesel Engine



### Alternator

It's Brushless Single bearing type and maximizes generating power and cooling efficiency in comparison with same capacity. It's strong durability, simple operation and easy maintenance.

### Fuel Tank

It's the customer's option to choose mounting fuel tank in the bed frame, which is convenient to use requiring only minimum installation space. It includes a visible level gauge, drain plug and feed-return lines.

### Bed Frame

It has a moving support for strong durability and easy movement.

# Standard Generator Set Features

## Standard Features

Descriptions		eGCU7000 Digital Type	Analogue Type
Meters & Gauge	Voltmeter	○	○
	Amperemeter	○	○
	Wattmeter	○	○
	Frequency & Tachometer	○	○
	Running Hour Meter	○	○
	Coolant Temp. Gauge	○	○
	Lube Oil Pressure Gauge	○	○
	Lube Oil Temp. Gauge	○	○
	Battery Voltmeter	○	○
Control Button & S/W	Emergency Stop Button	○	○
	Lamp Test/Reset Button	○	○
	Voltage/Ampere Select S/W	○	○
	Off/Run/Auto	○	○
Protect Circuit	Low Oil Pressure	○	○
	High Coolant Temperature	○	○
	Overspeed	○	○
	Overvoltage Relay(EOVR)	○	○
	Under Voltage Relay(EUVR)	○	○
	Overcurrent Relay(EOCR)	○	○
	Ground Overcurrent Relay(EOCGR)	○	Option
	Starting Failure	○	○
Communications Functions	Remote Control	Dry Contact Signal & Computer Control	Remote Controlled by Dry Contact Signal
	Remote Monitoring	Remote Monitoring by Computer Program	Need to Special Equipment

## Standing Generator Control Panel

Digital Type (Standard)

Analogue Type (Option)



## Standing Generator Control Panel

We offer digital type normally for our Standing Generator control panel. It's easy to operate and check the condition of generator's running. And it is suitable for automatic operation by using ACB, VCB as main circuit breaker.

### Terminal Box of Load Generating Power

It's easy to connect load cables by attaching the load output terminal box in the outside of alternator. Maker standard location is on the right of viewing from alternator toward engine.

### Terminal box of Connecting Operating lines

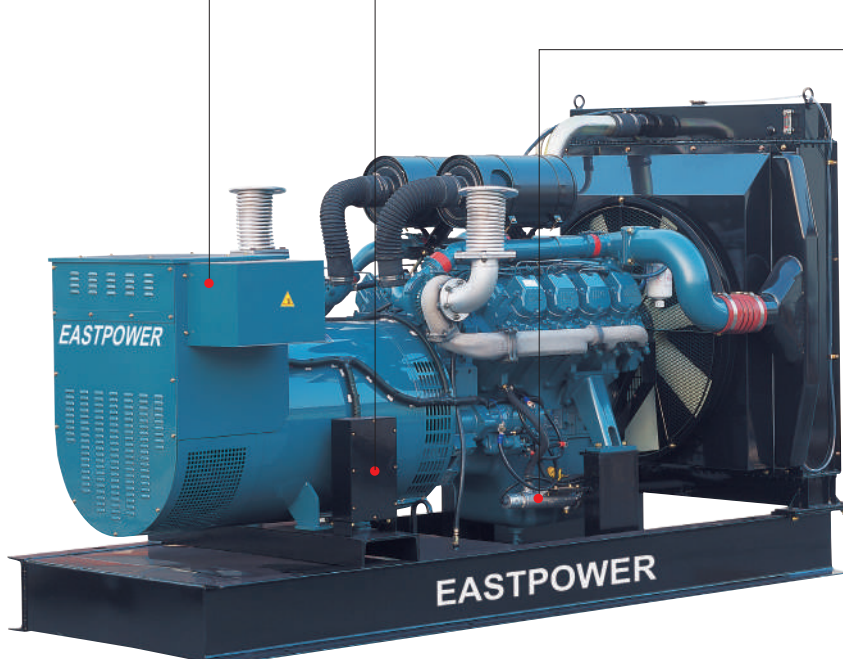
Being installed separately, it's easy to connect the operating line between Standing Generator control panel and Engine control panel.

### Jacket Preheater

It's an automatic preheating in the coolant line. It strengthens stability and protects the freezing trouble in winter and cold season.



Remote Control Screen



Standing Generator Control Panel

# DOOSAN Diesel Engines



DOOSAN

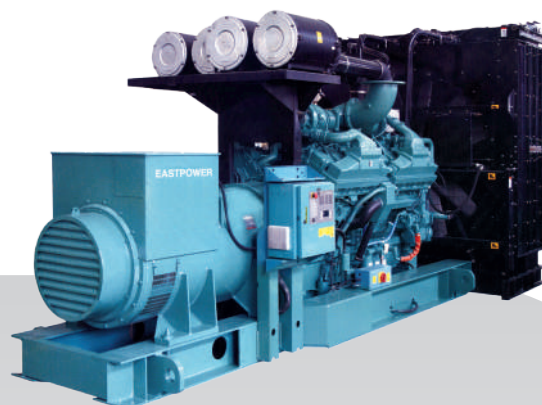
## Generator Sets powered by DOOSAN Diesel Engines

Model	60Hz		50Hz		Diesel Engine Model	Fuel Consumption(L/H)		Genset Dimension(Skid type)			
	Standby	Prime	Standby	Prime		60Hz	50Hz	Length	Width	Height	Weight
	kW/kVA	kW/kVA	kW/kVA	kW/kVA		100%	100%	mm	mm	mm	kg
EPG-66DD	66/83	60/75	50/63	45/56	SP344CB	16,6	13,8	1950	786	1608	600
EPG-85DD	85/106	77/97	65/81	59/74	SP344CC	20,7	18,1	1950	786	1608	600
EPG-75DD	75/94	69/86	58/73	53/66	D1146	24,7	20,6	2400	850	1440	1600
EPG-90DD	90/113	82/103	70/88	64/80	D1146	24,7	20,6	2400	850	1440	1600
EPG-115DD	115/144	104/130	90/113	82/103	D1146T	32,5	25,9	2400	850	1502	1710
EPG-130DD	130/163	118/148	100/125	90/113	D1146T	32,5	25,9	2400	850	1502	1710
EPG-170DD	170/213	154/192	140/175	127/159	P086TI-1	42,4	35,4	2650	946	1635	2000
EPG-175DD	175/219	159/199	145/181	132/165	DE12T	45,8	38,2	2600	920	1434	2000
EPG-200DD	200/250	182/227	176/220	160/200	P086TI	50,6	43,1	2650	946	1635	2030
EPG-230DD	230/287	207/258	200/250	180/225	DP086LA	56	48,7	2650	946	1635	2100
EPG-250DD	250/313	227/284	—	—	P126TI-3	63,3	—	2994	1099	1634	2400
EPG-275DD	275/344	250/313	245/306	223/278	P126TI	70,3	58,1	2994	1099	1634	2400
EPG-300DD	300/375	273/341	260/325	236/295	P126TI-II	73,8	63,1	2994	1099	1634	2480
EPG-330DD	330/413	305/381	300/375	273/341	DP126LA	80,5	68,1	3040	1110	1735	2750
EPG-360DD	360/450	327/409	330/413	300/375	DP126LB	85,8	76	3040	1110	1735	2750
EPG-400DD	400/500	364/455	370/463	320/400	P158LE	102,5	89,3	2990	1397	1794	2920
EPG-450DD	450/563	409/511	400/500	363/454	DP158LC	111,5	99,6	2990	1397	1794	3210
EPG-500DD	500/625	455/569	450/563	410/513	DP158LD	127,1	115,1	2990	1397	1794	3270
EPG-550DD	550/688	500/625	500/625	455/569	DP180LA	140,5	123,6	3200	1397	1873	3550
EPG-610DD	610/763	555/694	530/662	491/614	DP180LB	150,7	136,4	3200	1397	1873	3640
EPG-660DD	660/825	600/750	—	—	DP222LA	161,7	—	3390	1397	2130	3970
EPG-700DD	700/875	636/795	600/750	546/683	DP222LB	172,7	147,1	3390	1397	2130	4200
EPG-750DD	750/938	682/853	660/825	600/750	DP222LC	183,2	161	3390	1397	2130	4400

\* The above specifications are subject to change without notice to improve the performance of products.

# CUMMINS Diesel Engines

# CUMMINS



## Generator Sets powered by CUMMINS Diesel Engines

Model	60Hz		50Hz		Diesel Engine Model	Fuel Consumption(L/H)		Genset Dimension (Skid Type)			
	Standby	Prime	Standby	Prime		60Hz	50Hz	Length	Width	Height	Weight
	kW/kVA	kW/kVA	kW/kVA	kW/kVA		100%	100%	mm	mm	mm	kg
EPG-285CD	285/356	259/324	280/350	252/315	NTA855G6	74	69	3160	1000	1920	2855
EPG-350CD	350/438	318/398	—	—	NTA855G3	87	—	3160	1000	1920	3035
EPG-375CDQ	375/469	341/426	264/330	240/300	QSL9G5	89	63	3140	1100	1930	3160
EPG-375CDN	—	—	312/390	280/350	NTA855G4	—	76	3160	1000	1920	3035
EPG-400CD	400/500	—	—	—	NTA855G5	110	—	3160	1000	1920	3035
EPG-400CD	400/500	360/450	440/550	400/500	QSK15G8	97.6	103	3495	1500	1810	3850
EPG-450CDN	—	—	352/440	320/400	NTA855G7	—	98	3230	1000	1920	3140
EPG-450CDK	450/562	403/504	400/500	360/450	KTA19G3	111	97	3420	1250	1910	4055
EPG-500CD	500/625	455/569	—	—	QSK15G9	117	—	3495	1500	1810	3700
EPG-500CD	500/625	455/569	461/576	409/511	KTA19G4	122	107	3420	1250	1910	4055
EPG-520CD	—	—	520/650	472/590	KTA19G8	—	139	3720	1285	1910	4225
EPG-600CD	600/750	545/681	565/706	512/640	VTA28G5	154	140	3820	1485	2040	5605
EPG-660CD	—	—	660/825	600/750	VTA28G6	—	162	4080	1760	2185	6280
EPG-750CD	750/938	682/852	—	—	VTA28G7	221	—	4080	1760	2185	6280
EPG-825CD	825/1031	744/930	720/900	655/819	QSK23G3	189	161	4595	1505	2090	6700
EPG-925CD	925/1156	835/1044	833/1041	751/939	QST30G3	207	184	4230	1760	2250	6890
EPG-1000CD	1000/1250	900/1125	888/1110	800/1000	QST30G4	240	202	4470	1755	2250	7490
EPG-1250CD	1250/1563	1102/1378	1120/1400	1005/1256	KTA50G3	291	261	5285	2070	2235	9960
EPG-1500CD	—	—	1340/1675	1125/1406	KTA50G8	—	289	5640	2250	2250	11300
EPG-1500CD	—	—	1340/1675	1200/1500	KTA50GS8	—	345	5640	2250	2250	11300
EPG-1500CD	1500/1875	1364/1705	—	—	KTA50G9	330	—	5640	2250	2250	11300
EPG-1650CD	—	—	1650/2063	1500/1875	QSK60G3	—	363	5830	2270	2550	15245
EPG-1800CD	—	—	1800/2250	1600/2000	QSK60G4	—	394	5895	2270	2550	15245
EPG-2000CD	2000/2500	1800/2250	—	—	QSK60G6	466	—	5830	2270	2550	15245
EPG-2200CD	—	—	2000/2500	1800/2250	QSK60G8	—	500	5845	2270	2800	17000
EPG-2250CD	2250/2812	—	—	—	QSK60G9	517	—	5845	2270	2800	17000
EPG-2500CD	2500/3125	2250/2812	—	—	QSK78G7	592	—	5460	2255	2535	19710
EPG-2650CD	—	—	2660/3325	2400/3000	QSK78G9	—	662	7160	2255	2535	25157
EPG-3500CD	3500/4375	3000/3750	—	—	QSK95G9	878	—	7910	3028	3663	32000
EPG-3500CD	—	—	3000/3750	2680/3350	QSK95G10	—	1231	7910	3028	3663	32000

\* The above specifications are subject to change without notice to improve the performance of products.

# MTU Diesel Engines



MTU

## Generator Sets powered by MTU Diesel Engines

Model	60Hz		50Hz		Diesel Engine		Fuel Consumption(L/H)		Genset Dimension (Skid Type)			
	Standby	Prime	Standby	Prime	Model		60Hz	50Hz	Length	Width	Height	Weight
	kW/kVA	kW/kVA	kW/kVA	kW/kVA	60Hz	50Hz	100%	100%	mm	mm	mm	kg
EPG-700MD	700/875	630/788	560/700	510/638	12V2000G45	12V2000G25	120,6	101,2	3600	1580	1900	5200
EPG-800MD	800/1000	730/913	680/850	620/775	12V2000G85	12V2000G65	134,6	109,9	3800	1580	1900	5500
EPG-900MD	900/1125	820/1025	800/1000	720/900	16V2000G45	16V2000G25	169,3	134,6	4300	1800	2300	6800
EPG-1000MD	1000/1250	910/1138	880/1100	800/1000	16V2000G85	16V2000G65	187,3	150,4	4300	1800	2300	6900
EPG-1200MD	1200/1500	1090/1362	1000/1250	900/1125	18V2000G85	18V2000G65	247,2	212,7	4600	1800	2400	7700
EPG-1300MD	—	—	1200/1500	1100/1375	—	12V4000G23R	278,6	258,7	5800	2100	2450	10700
EPG-1600MD	1600/2000	1400/1750	1450/1813	1300/1625	12V4000G43	12V4000G23	278,6	258,7	5800	2100	2450	10700
EPG-1750MD	1750/2188	1591/1989	1600/2000	1450/1813	12V4000G83	12V4000G63	321,4	292,9	5800	2100	2450	11300
EPG-2100MD	2100/2625	1850/2313	1800/2250	1636/2045	16V4000G43	16V4000G23	364,5	325,1	6800	2650	2500	14200
EPG-2300MD	2300/2875	2091/2614	2000/2500	1800/2250	16V4000G83	16V4000G63	422,4	363,6	6850	2850	2500	14400
EPG-2500MD	2500/3125	2300/2875	2200/2750	2000/2500	20V4000G43	20V4000G23	591,7	522,8	7700	2900	2885	23482
EPG-2800MD	2800/3500	2500/3125	2400/3000	2200/2750	20V4000G83	20V4000G63	651,2	575,1	7900	4638	2795	25650
EPG-3300MD	3300/4125	2800/3500	2600/3250	2400/3000	20V4000G83L	20V4000G63L	757,8	652,1	6116	4638	2795	26750

\* The above specifications are subject to change without notice to improve the performance of products.

# CATERPILLAR Diesel Engines

CATERPILLAR



## Generator Sets powered by CATERPILLAR Diesel Engines

Model	60Hz		50Hz		Diesel Engine Model	Fuel Consumption	Genset Dimension (Skid Type)			
	Standby	Prime	Standby	Prime		60Hz	Length	Width	Height	Weight
	kW/kVA	kW/kVA	kW/kVA	kW/kVA		L/H, 100%	mm	mm	mm	kg
EPG-500CT	500/625	455/569	400/500	364/455	C15 ATAAC	127	3830	1135	2160	4500
EPG-600CT	600/750	545/681	520/650	480/600	C18 ATAAC	163	3910	1485	2101	5000
EPG-700CT	700/875	635/794	600/750	544/680	3412 TTA	188	4125	1990	1906	6500
EPG-750CT	750/938	680/850	640/800	580/725	3412 STA	206	4125	1990	1906	6500
EPG-800CT	800/1000	725/906	720/900	648/810	3412 STA	222	4125	1990	1906	6500
EPG-1000CT	1000/1250	910/1138	880/1100	800/1000	C32 ATAAC	272	4348	2187	2174	10000
EPG-1100CT	1100/1375	1000/1250	1000/1250	920/1150	3512 TA	305	5138	1975	2368	13000
EPG-1250CT	1250/1563	1135/1419	1120/1400	1020/1275	3512 TA	354	5138	1975	2368	13000
EPG-1400CT	1400/1750	1275/1594	1200/1500	1088/1360	3512B TA	385	5252	2286	2367	14500
EPG-1500CT	1500/1875	1360/1700	1280/1600	1200/1500	3512B TA	411	5252	2286	2367	14500
EPG-1750CT	1750/2188	1600/2000	1600/2000	1460/1825	3516 TA	470	6350	2286	2367	17500
EPG-2000CT	2000/2500	1825/2281	1800/2250	1600/2000	3516B TA	518	6247	2286	2494	18500
EPG-2250CT	2250/2813	2000/2500	2000/2500	1820/2275	3516B TA	594	6975	2588	3051	19000

\* The above specifications are subject to change without notice to improve the performance of products.

# PERKINS Diesel Engines



**PERKINS**

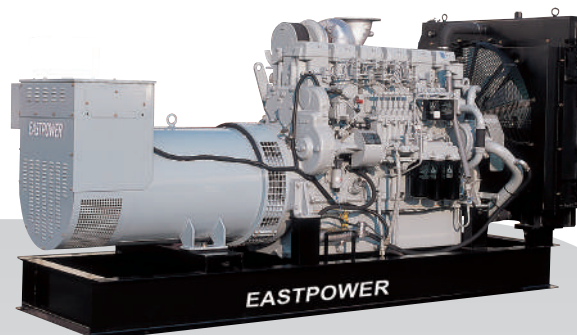
## Generator Sets powered by PERKINS Diesel Engines

Model	60Hz		50Hz		Diesel Engine	Fuel Consumption	Genset Dimension (Skid Type)			
	Standby	Prime	Standby	Prime		60Hz	Length	Width	Height	Weight
	kW/kVA	kW/kVA	kW/kVA	kW/kVA	Model	(L/H) 100%	mm	mm	mm	kg
EPG-60PD	60/75	54/68	53/66	48/60	1103A-33TG2	18,2	1900	750	1250	1200
EPG-100PD	100/125	90/113	88/110	80/100	1104C-44TAG2	28,4	2450	800	1450	1550
EPG-150PD	150/188	134/168	132/165	120/150	1106A-70TAG2	50	2750	900	1700	2000
EPG-275PD	275/344	250/313	220/275	200/250	1506A-E88TAG3	75	3100	1150	1700	2800
EPG-300PD	300/375	280/350	240/300	220/275	1506A-E88TAG4	87	3100	1150	1700	2800
EPG-400PD	—	—	400/500	360/450	2506A-E15TAG1	102	3650	1200	2100	3000
EPG-400PD	400/500	360/450	—	—	2206D-E13TAG3	102	3650	1200	2100	3000
EPG-550PD	550/688	500/625	440/550	400/500	2806C-E16TAG2	148	4000	1200	2100	4000
EPG-600PD	600/750	550/688	510/638	445/556	2806C-E18TAG1	161	4000	1650	2150	4400
EPG-660PD	660/825	600/750	640/800	580/725	4006-23TAG2A	189	4500	1850	2150	6000
EPG-750PD	750/938	675/844	705/881	640/800	4006-23TAG3A	213	4600	1850	2150	6000
EPG-800PD	—	—	790/988	720/900	4008TAG1A	212	5650	2000	2300	8700
EPG-800PD	770/963	700/875	—	—	4008TAG1	212	5650	2000	2300	8700
EPG-900PD	—	—	895/1119	815/1019	4008TAG2A	214	5650	2000	2300	8700
EPG-900PD	875/1094	790/988	—	—	4008TAG2	216	5650	2000	2300	8700
EPG-1200PD	—	—	1120/1400	1020/1275	4012TAG1A	203	5700	2100	2650	10000
EPG-1200PD	1190/1488	1080/1350	—	—	4012TAG1	206	5700	2100	2650	10000
EPG-1300PD	—	—	1315/1644	1195/1494	4012TAG2A	206	5700	2100	2650	11000
EPG-1300PD	1300/1625	1200/1500	—	—	4012TAG2	208	5700	2100	2650	11000
EPG-1675PD	1504/1880	1360/1700	1500/1875	1364/1705	4012-46TAG3A	275	5200	2200	2650	14200
EPG-1750PD	—	—	1624/2030	1476/1845	4016TAG1A	277	5900	2200	2650	15000
EPG-1850PD	—	—	1808/2260	1640/2050	4016TAG2A	316	5950	2200	2650	16500
EPG-2000PD	—	—	2000/2500	1800/2250	4016-61TRG3	346	6300	2300	3040	18500

\* The above specifications are subject to change without notice to improve the performance of products.

# MITSUBISHI Diesel Engines

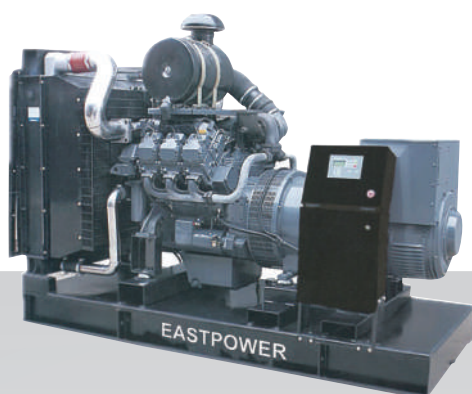
**MITSUBISHI**



## Generator Sets powered by MITSUBISHI Diesel Engines

Model	60Hz		50Hz		Diesel Engine Model	Fuel Consumption(L/H)		Genset Dimension (Skid Type)			
	Standby	Prime	Standby	Prime		60Hz	50Hz	Length	Width	Height	Weight
	kW/kVA	kW/kVA	kW/kVA	kW/kVA		100%	100%	mm	mm	mm	kg
EPG-600MSD	600/750	545/681	520/650	470/588	S6R-PTA	140	—	3600	1450	1700	5200
EPG-800MSD	800/1000	727/908	680/850	620/775	S12A2-PTA	190	165	3900	1600	2170	6500
EPG-1000MSD	1000/1250	910/1138	900/1125	820/1025	S12H-PTA	241	216	4300	1650	2400	8200
EPG-1250MSD	1250/1563	1135/1419	1120/1400	1020/1275	S12R-PTA2	325	290	4750	1850	2830	10400
EPG-1500MSD	1500/1875	1360/1700	1320/1650	1200/1500	S16R-PTA	386	347	5310	1850	2830	12600
EPG-1750MSD	1750/2188	1590/1988	1495/1869	1360/1700	S16R-PTA2	435	398	5400	2650	3200	14500
EPG-2000MSD	2000/2500	1800/2250	1760/2200	1600/2000	S16R-PTAA2	469	404	6000	2400	3200	15600
EPG-2500MSD	—	—	2000/2500	1800/2250	S16R-PTAW	—	478	6200	2400	3200	17550

\* The above specifications are subject to change without notice to improve the performance of products.



# DEUTZ

## Generator Sets powered by DEUTZ Diesel Engines

Model	60Hz		50Hz		Diesel Engine Model	Fuel Consumption(L/H)	Genset Dimension (Skid Type)			
	Standby	Prime	Standby	Prime		60Hz	Length	Width	Height	Weight
	kW/kVA	kW/kVA	kW/kVA	kW/kVA		(L/H) 100%	mm	mm	mm	kg
EPG-14DE	14/18	12/15	11/14	10/13	F2M2011	6,5	1300	600	1400	580
EPG-22DE	22/28	20/25	17/21	16/20	F3M2011	10	1300	660	1400	580
EPG-33DE	33/41	30/38	26/33	24/30	F4M2011	12,5	1780	750	1430	780
EPG-44DE	44/55	40/50	35/44	32/40	BF4M2011	15	1780	750	1430	780
EPG-60DE	60/75	54/67	52/65	48/60	BF4M2012	18,9	2000	980	1300	1050
EPG-75DE	75/94	68/85	70/88	64/80	BF4M2012C	22,7	2000	980	1300	1100
EPG-88DE	88/110	80/100	88/110	80/100	BF4M1013EC	28	2150	980	1550	1190
EPG-114DE	114/143	104/130	120/150	110/137	BF4M1013FC	36,5	2150	980	1550	1380
EPG-140DE	140/175	128/160	132/165	120/150	BF6M1013EC	41,8	2720	1220	2150	1560
EPG-176DE	176/220	160/200	160/200	144/180	BF6M1013FCG2	52,7	2720	1220	2150	1800
EPG-200DE	200/250	180/225	176/220	160/200	BF6M1013FCG3	60,2	2720	1220	2150	1820
EPG-242DE	242/303	220/275	220/275	200/250	TCD2013L6 4V	68	2750	1220	2200	2250
EPG-308DE	308/385	280/350	264/330	240/300	BF6M1015C G1	75,5	2800	1400	2200	2320
EPG-310DE	—	—	310/388	280/350	BF6M1015C G2	—	2800	1400	2200	2320
EPG-352DE	352/440	320/400	330/413	300/375	BF6M1015CP	95	2800	1400	2200	3300
EPG-413DE	413/516	376/470	—	—	BF8M1015C G1	110	2800	1400	2200	3610
EPG-400DE	—	—	400/500	360/450	BF8M1015C G2	—	4800	1650	2230	3580
EPG-473DE	473/591	430/538	440/550	400/500	BF8M1015CP	125	4800	1650	2230	3680

\* The above specifications are subject to change without notice to improve the performance of products.

# GAS ENGINES

## DOOSAN



### Generator Sets powered by DOOSAN Gas Engines

Model		Engine Power				Electr. Genset Power				Fuel Consumption (Nm <sup>3</sup> /hr)	
Genset	Engine	1800 rpm				1800 rpm [60 Hz]				1800 rpm [60 Hz]	
		Standby		Prime		Standby		Prime		Prime	
		PS	kWm	PS	kWm	kWe	kVA	kWe	kVA	100%	75%
EPG-26DG	G2300TI	—	—	47	35	—	—	26	33	8	—
EPG-135DG	GE08TI	224	165	204	150	149	186	135	169	41	33
EPG-180DG	GE12TI	306	225	272	200	198	248	180	225	57	42
EPG-250DG	GV158TI	408	300	367	270	275	344	250	313	76	60
EPG-310DG	GV180TI	517	380	462	340	341	426	310	388	96	79
EPG-380DG	GV222TI	625	460	557	410	418	523	380	475	116	94
EPG-500DG	GV222TI-LB	—	—	762	500	—	—	500	625	140,7	—

\* The above specifications are subject to change without notice to improve the performance of products.

# Weather/Sound Proof

## For Silent Operating

Generator sets can be soundproof to minimize the sound pollution. Basically it's fitted with a sound-attenuated and weatherproof enclosure which maximizes the space economic design.

## Outstanding Features

### Compact Structure

Optimal space design offers a compact and powerful electrical generating package, which provides great accessibility and easy operation.

### Easy Maintenance

The standard skid mounted generator allows easy access to all engine and alternator components. Sound-attenuated or weatherproof enclosure can be easily dissembled or unbolted for repairing or renovating.

### Easy to Move

Our generators can be easily moved with an appropriately sized fork truck at most. The center lifting eye on enclosure units provides a quick and easy way to lift or relocate the generator.

### Environmentally Friendly

The exhaust emission reduction engine and optional sound-attenuated enclosure along with the stand vibration absorption mounts insure a minimum of noise and air pollution.

#### Ladder Access On Canopies

Ladders are designed for users to access easily and maintain conveniently.



#### Fuel Drain Cock

The easily accessible fuel drain is provided for quick and easy maintenance of the fuel system.



#### Weather Proof(Bonnet)

External drain plugs for oil, fuel and water are fitted for convenience in performing routine maintenance. For checking-up and repairing, the canopy(bonnet) can be easily unbolted which allows full access to the engine.

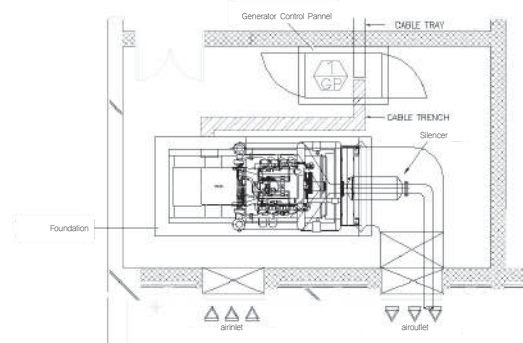
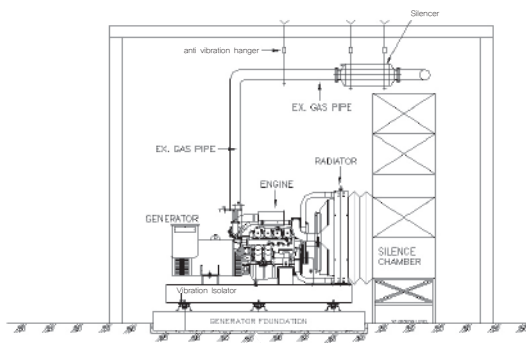
The innovative designs of the weatherproof series has achieved significant size and weight reductions over all models

#### Trailer for Movable Generator Set

It's designed with traffic safety by priority. Each trailer is equipped with a suspension and brake system to adequately transport and stop the generator. And each unit is complete with starting system, exhaust noise abatement and includes the following standard features;

- Traction Hook
- Reflection Tail Lamp
- Fender
- Caster Wheel
- Turning U-bar
- Mudguard
- Parking Brake

# Installation Detail



Model	Foundation (L X W X H, mm)	Vibration Isolator (kg X EA)	Battery	Cable(SQ X Core)			Exhaust Pipe		
				220V	380V	440V	10M	20M	30M
EPG-60DD	2500 X 1140 X 250	350 X 6	120AH X 2	35 X 2	50 X 1	35 X 1	1 X 65A	1 X 100A	1 X 100A
EPG-75DD	2500 X 1140 X 300	450 X 6		50 X 2	70 X 1	50 X 1	1 X 65A	1 X 100A	1 X 100A
EPG-90DD	2500 X 1140 X 300	450 X 6		70 X 2	95 X 1	70 X 1	1 X 65A	1 X 100A	1 X 100A
EPG-115DD	2500 X 1140 X 300	450 X 6		95 X 2	35 X 2	35 X 2	1 X 100A	1 X 100A	1 X 125A
EPG-130DD	2500 X 1140 X 300	450 X 6		70 X 3	50 X 2	35 X 2	1 X 100A	1 X 100A	1 X 125A
EPG-175DD	2800 X 1220 X 300	550 X 6	150AH X 2	95 X 3	95 X 2	70 X 2	1 X 100A	1 X 125A	1 X 125A
EPG-200DD	2800 X 1150 X 300	550 X 6		120 X 3	95 X 2	70 X 2	1 X 100A	1 X 125A	1 X 125A
EPG-250DD	3200 X 1240 X 300	550 X 6		120 X 4	70 X 3	70 X 3	1 X 100A	1 X 150A	1 X 150A
EPG-275DD	3200 X 1240 X 300	550 X 6		120 X 4	95 X 3	70 X 3	1 X 100A	1 X 150A	1 X 150A
EPG-300DD	3200 X 1240 X 300	550 X 6		150 X 4	95 X 3	70 X 3	1 X 100A	1 X 150A	1 X 150A
EPG-330DD	3300 X 1450 X 300	450 X 10	200AH X 2	185 X 4	120 X 3	95 X 3	2 X 100A	2 X 150A	2 X 150A
EPG-360DD	3300 X 1450 X 300	450 X 10		185 X 4	150 X 3	95 X 3	2 X 100A	2 X 150A	2 X 150A
EPG-400DD	3300 X 1450 X 300	450 X 10		240 X 4	150 X 3	120 X 3	2 X 100A	2 X 150A	2 X 150A
EPG-450DD	3300 X 1450 X 300	450 X 10		300 X 4	185 X 3	150 X 3	2 X 100A	2 X 150A	2 X 150A
EPG-500DD	3500 X 1450 X 300	450 X 10		240 X 5	120 X 4	120 X 4	2 X 100A	2 X 150A	2 X 150A
EPG-550DD	3500 X 1450 X 300	550 X 10		300 X 5	185 X 4	120 X 4	2 X 100A	2 X 150A	2 X 200A
EPG-610DD	3500 X 1450 X 300	550 X 10		240 X 6	185 X 4	150 X 4	2 X 100A	2 X 150A	2 X 200A
EPG-660DD	3700 X 1450 X 300	650 X 10		300 X 6	240 X 4	185 X 4	2 X 100A	2 X 150A	2 X 200A
EPG-700DD	3700 X 1450 X 300	650 X 10		300 X 6	240 X 4	185 X 4	2 X 100A	2 X 150A	2 X 200A
EPG-750DD	3700 X 1450 X 300	650 X 10		300 X 5	300 X 4	240 X 4	2 X 100A	2 X 150A	2 X 200A

Model	Circuit Breaker		Radiator				Fuel Tank (mounted)	Coolant Capacity(ℓ )	Antifreezing Liquid(ℓ )	Lub Oil Capacity(ℓ )
	ACB(AF/AT)	MCCB(AF/AT)	Intake Air (m³/min)	Air Inlet Grill Size(m²)	Dimension (D X H, m)	Air Outlet Grill Size(m²)				
EPG-60DD	630/630	125/125	226	0,541	0,710 X 0,635	0,451	165	34	17	19
EPG-75DD	630/630	250/150	289	0,541	0,710 X 0,635	0,451	165	39	19,5	15,5
EPG-90DD	630/630	250/175	289	0,541	0,710 X 0,635	0,451	165	39	19,5	15,5
EPG-115DD	630/630	250/225	359	0,541	0,710 X 0,635	0,451	165	39	19,5	15,5
EPG-130DD	630/630	250/250	359	0,541	0,710 X 0,635	0,451	165	39	19,5	15,5
EPG-175DD	630/630	400/350	455	0,756	0,768 X 0,820	0,63	220	52	26	23
EPG-200DD	630/630	400/400	535	0,886	0,788 X 0,936	0,738	200	49	24,5	15,5
EPG-250DD	630/630	630/500	802	1,145	0,935 X 1,020	0,954	220	60	30	23
EPG-275DD	630/630	630/630	802	1,145	0,935 X 1,020	0,954	220	60	30	23
EPG-300DD	630/630	630/630	1000	1,145	0,935 X 1,020	0,954	220	60	30	23
EPG-330DD	800/800	630/630	1000	1,918	1,310 x 1,220	1,598	310	79	39,5	28
EPG-360DD	800/800	800/800	1000	1,918	1,310 x 1,220	1,598	310	79	39,5	28
EPG-400DD	800/800	800/800	1000	1,918	1,310 x 1,220	1,598	310	79	39,5	28
EPG-450DD	1000/1000	1000/1000	1125	1,918	1,310 x 1,220	1,598	310	79	39,5	22
EPG-500DD	1000/1000	1000/1000	1247	1,918	1,310 x 1,220	1,598	310	79	39,5	22
EPG-550DD	1250/1250	1200/1200	1247	1,918	1,310 x 1,220	1,598	380	91	45,5	34
EPG-610DD	1250/1250	1200/1200	1509	1,918	1,310 x 1,220	1,598	380	91	45,5	34
EPG-660DD	1600/1600	—	1509	2,374	1,310 x 1,510	1,978	400	114	57	40
EPG-700DD	1600/1600	—	1855	2,374	1,310 x 1,510	1,978	400	114	57	40
EPG-750DD	1600/1600	—	1855	2,374	1,310 x 1,510	1,978	400	114	57	40

\* The above specifications are subject to change without notice to improve the performance of products.